



 CROCHET | SKILL LEVEL: **EASY**

ABBREVIATIONS

Approx = Approximate(ly)
Beg = Begin(ning)
Ch = Chain(s)
Cont = Continue
Dc = Double crochet
Hdc = Half double crochet
Rep = Repeat

Rnd = Round
RS = Right side
Sc = Single crochet
St(s) = Stitch(es)
Tr = Treble crochet
WS = Wrong side

MEASUREMENT

Approx. 40" [101.5 cm] square.

GAUGE

13 sc and 14 rows = 4" [10 cm].

INSTRUCTIONS

Ch 133. (See diagram on page 2).

1st row: (RS). 1 sc in 2nd ch from hook. 1 sc in each ch to end of ch. Turn. 132 sc.

2nd row: Ch 1. 1 sc in first sc. Ch 2. Skip next 2 sc. *1 sc in each of next 2 sc. Ch 2. Skip next 2 sc. Rep from * to last sc. 1 sc in last sc. Turn.

3rd row: Ch 3 (counts as dc). *4 tr in next ch-2 sp. Rep from * to last sc. 1 dc in last sc. 33 4-tr groups.

4th row: Ch 1. 1 sc in first dc. 1 hdc between first dc and next 4-tr group. *Ch 2. 2 hdc between last 4-tr group and next 4-tr group. Rep from * to last 4-tr group. Ch 2.

1 hdc between last 4-tr group and turning ch. 1 sc in last dc. Turn. Rep last 2 rows until work from beg measures approx 39½" [100.5 cm], ending on a WS row.

EDGING

NOTE: The first rnd of edging does not show up on diagram.

1st rnd: (RS). Ch 1. 1 sc in first sc. 1 sc in next hdc. 2 sc in next ch-2 sp. *1 sc in each of next 2 hdc. 2 sc in next ch-2 sp. Rep from * to last 2 sts. 1 sc in each of last 2 sts. Do not turn.

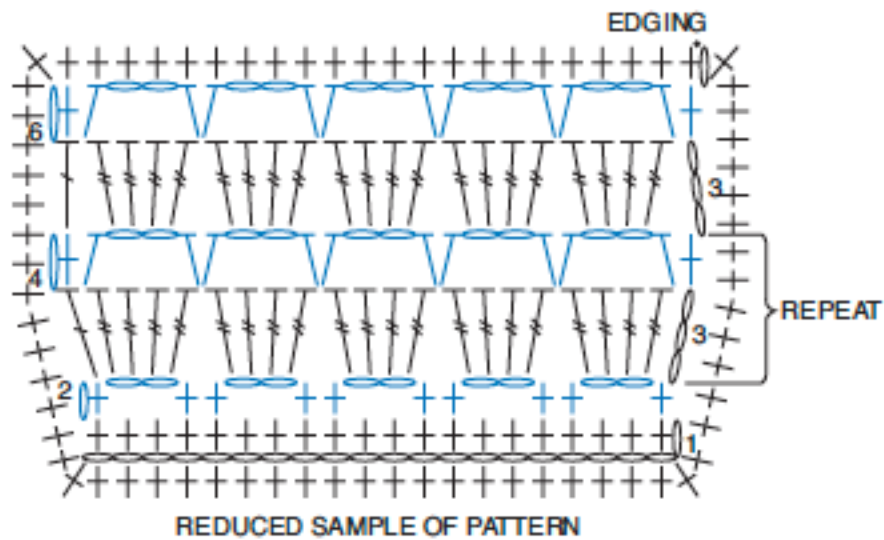
2nd rnd: Ch 1. Work 1 rnd of sc evenly around edge of Blanket, working 3 sc in each corner. Join with sl st to first sc. Fasten off.

MATERIALS

Caron® Baby Cakes™ (3.5 oz/100 g; 231 yds/211 m)
 Fresh Air (50014) **5 balls**

Size U.S. H/8 (5 mm) crochet hook **or size needed to obtain gauge.**
 Stitch markers.

DIAGRAM



KEY

- = chain (ch)
- = slip st (sl st)
- † = single crochet (sc)
- ┌ = half double crochet (hdc)
- └ = double crochet (dc)
- ⚡ = treble crochet (tr)